

# TARTER®

FARM AND RANCH EQUIPMENT

## ATV DISC/CULTIPACKER COMBO

OPERATION AND ASSEMBLY MANUAL



For more information and questions, please contact:  
Tarter Customer Service  
**1-800-RED-GATE (1-800-733-4283)**

Tarter products are sold through Authorized Retailers.

# INTRODUCTION

## THANK YOU FOR PURCHASING THIS PRODUCT

Thank you for choosing Tarter – congratulations on your purchase. Tarter Farm and Ranch Equipment has been improving life on your land since 1945. You have purchased one of our dependable products. Through proper care and operation you can expect to receive many years of service when maintained and used in accordance within the capabilities of this implement.

### TO THE OWNER:

Read this manual before operating your Tarter product. Keep this manual handy for reference. Require all operators to read this manual carefully and become acquainted with all adjustments and operating procedures before attempting to operate the equipment.

The equipment you have purchased has been carefully engineered and manufactured to provide dependable and satisfactory use. Like all mechanical products, it will require cleaning and upkeep. Lubricate the unit as specified. Please observe all safety information in this manual and safety decals on the equipment. Use only genuine Tarter service parts. Substitute parts will void the warranty and may not meet standards required for safe and satisfactory operation.

### CUSTOMER INFORMATION

**Name** \_\_\_\_\_

**Purchased From** \_\_\_\_\_

**Date Purchased** \_\_\_\_\_

**Model** \_\_\_\_\_

**Serial #** \_\_\_\_\_

### PREPARATION CHECKLIST

Verify the following before operating your ATV Disc/Culti-Packer Combo

- |  |  |
|--|--|
| <input type="checkbox"/> 1. Implement is completely assembled.                                   | <input type="checkbox"/> 5. All decals in place and legible.   |
| <input type="checkbox"/> 2. Cable is in good working condition.                                  | <input type="checkbox"/> 6. Overall condition good (i.e. paint, welds)   |
| <input type="checkbox"/> 3. All fittings are lubricated.   | <input type="checkbox"/> 7. Operator's manual has been given to owner and the owner has been instructed on the safe and proper use of the ATV Disc/Culti-Packer Combo. |
| <input type="checkbox"/> 4. All disc are free of nicks and cracks and in good working condition. |  |

For more information and questions, please contact:

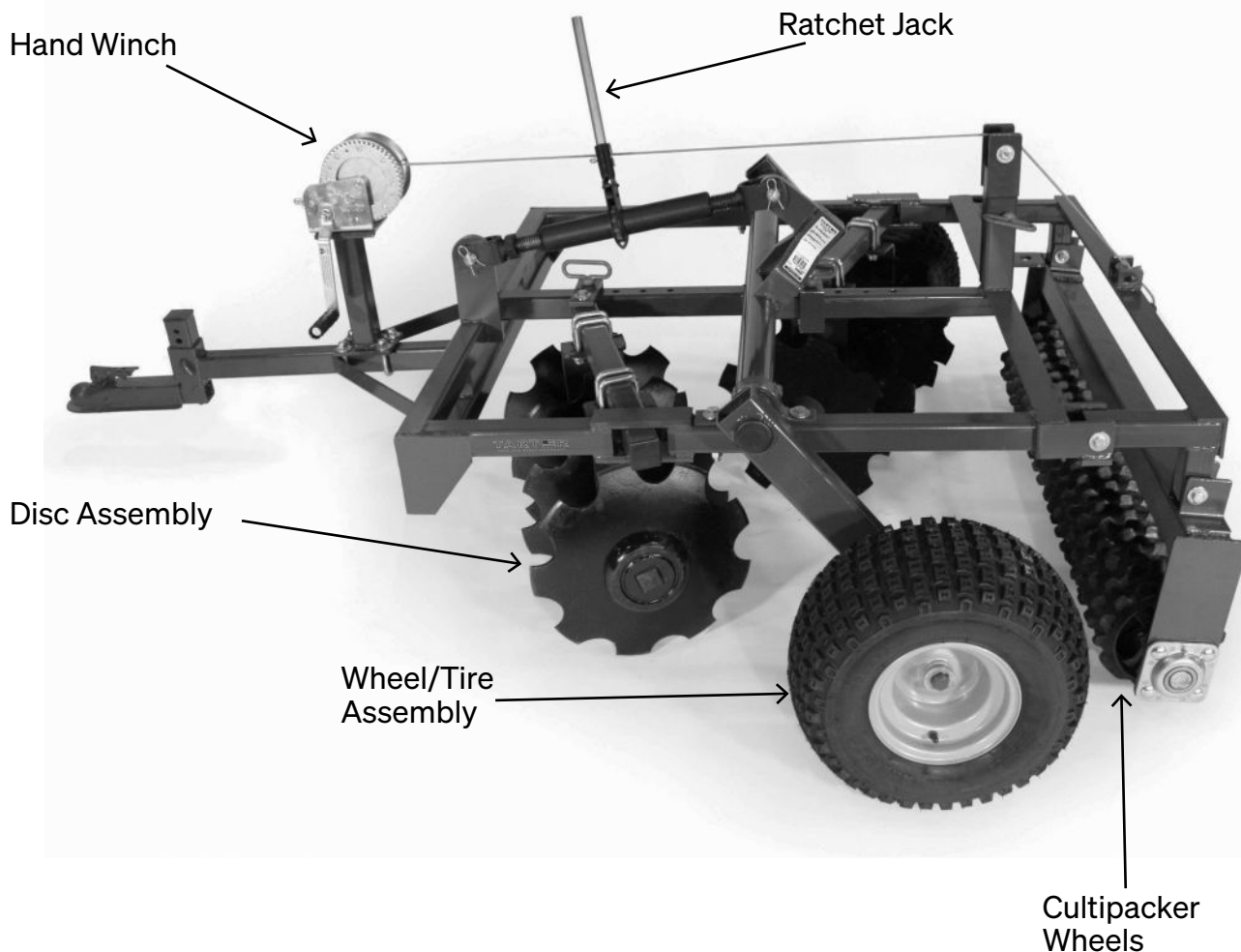
Tarter Customer Service

**1-800-RED-GATE** (1-800-733-4283)

## GENERAL DESCRIPTION

Tarter's Disc/Culti-Packer Combo is ideal for tilling soil to create game plots and gardens. This product is easily attached to ATVs, UTVs and small tractors. The combo combines deep cutting of the eight-blade tillage disc with soil preparation and compaction of the adjustable culti-packer. The adjustable 16" blades provide deep cutting in all soil types and can be adjusted from 0° through 20° with a 48" cutting width. This manual is provided to give you the necessary operation and maintenance instructions for keeping your rotary tiller in excellent operating condition. Please read this manual thoroughly. Understand the purpose of the controls and how to use them. Observe all safety precautions on the machine and as noted throughout this manual. If any assistance or additional information is needed, contact us at 1-800-RED-GATE.

### Major Components



### NOTICE

All information, illustrations, and specifications in this manual are based on the latest information available at the time of publication. Because we are always striving to improve our products, the images could differ slightly from actual equipment. Specifications are subject to change without notice. We also reserve the right to make changes at any time without notice.

# TABLE OF CONTENTS

## TABLE OF CONTENTS

Description . . . . .	3
Safety . . . . .	5
Safety Description and Decals . . . . .	6
Assembly/Attaching . . . . .	10
Transportation/Operation . . . . .	11
Detaching/Storage/Maintenance . . . . .	12
Product Specifications . . . . .	13
Parts . . . . .	14
Warranty . . . . .	16
Notes . . . . .	18

**Safety is a primary concern in the design and manufacturing of our products. Unfortunately, our efforts to provide safe equipment can be eliminated by an operator's single careless act.**

**In addition to the design and configuration of equipment, hazard control and accident prevention are dependent upon the awareness, concern, judgment, and proper training of personnel involved in the operation, transport, maintenance and storage of equipment.**

**It has been said "The best safety device is an informed, careful operator." We ask you to be that kind of operator.**

Throughout this manual, the term **IMPORTANT** is used to indicate that failure to observe procedures can cause damage to equipment. The terms **CAUTION**, **WARNING** and **DANGER** are used in conjunction with the Safety-Alert Symbol, (a triangle with an exclamation mark), to indicate the degree of hazard for items of personal safety.



This Safety-Alert Symbol indicates a hazard and means **ATTENTION! BECOME ALERT! YOUR SAFETY IS INVOLVED!**

 **DANGER**

Indicates an imminently hazardous situation that, if not avoided, will result in death or serious injury.

 **WARNING**

Indicates a potentially hazardous situation that, if not avoided, could result in death or serious injury, and includes hazards that are exposed when guards are removed.

 **CAUTION**

Indicates a potentially hazardous situation that, if not avoided, may result in minor or moderate injury.

**IMPORTANT**

Indicates that failure to observe can cause damage to equipment.

**NOTE**

Indicates helpful information.

(Safety Rules continued on next page)



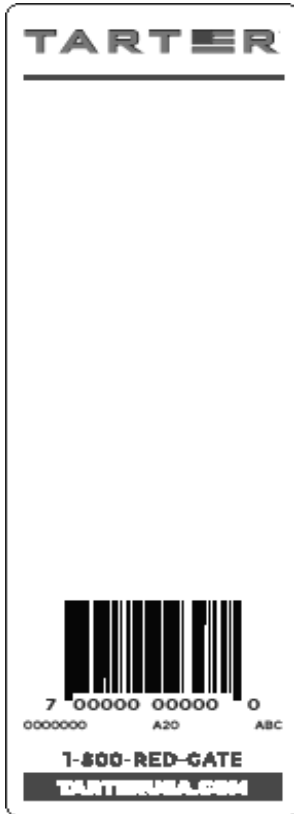
## SAFETY and INSTRUCTIONAL DECALS

### ATTENTION! BECOME ALERT! YOUR SAFETY IS INVOLVED!

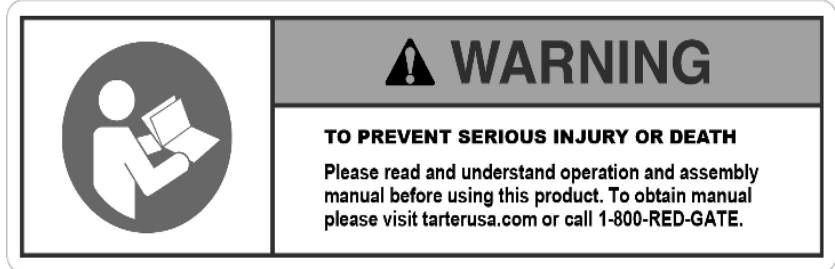


Replace Immediately if Damaged!

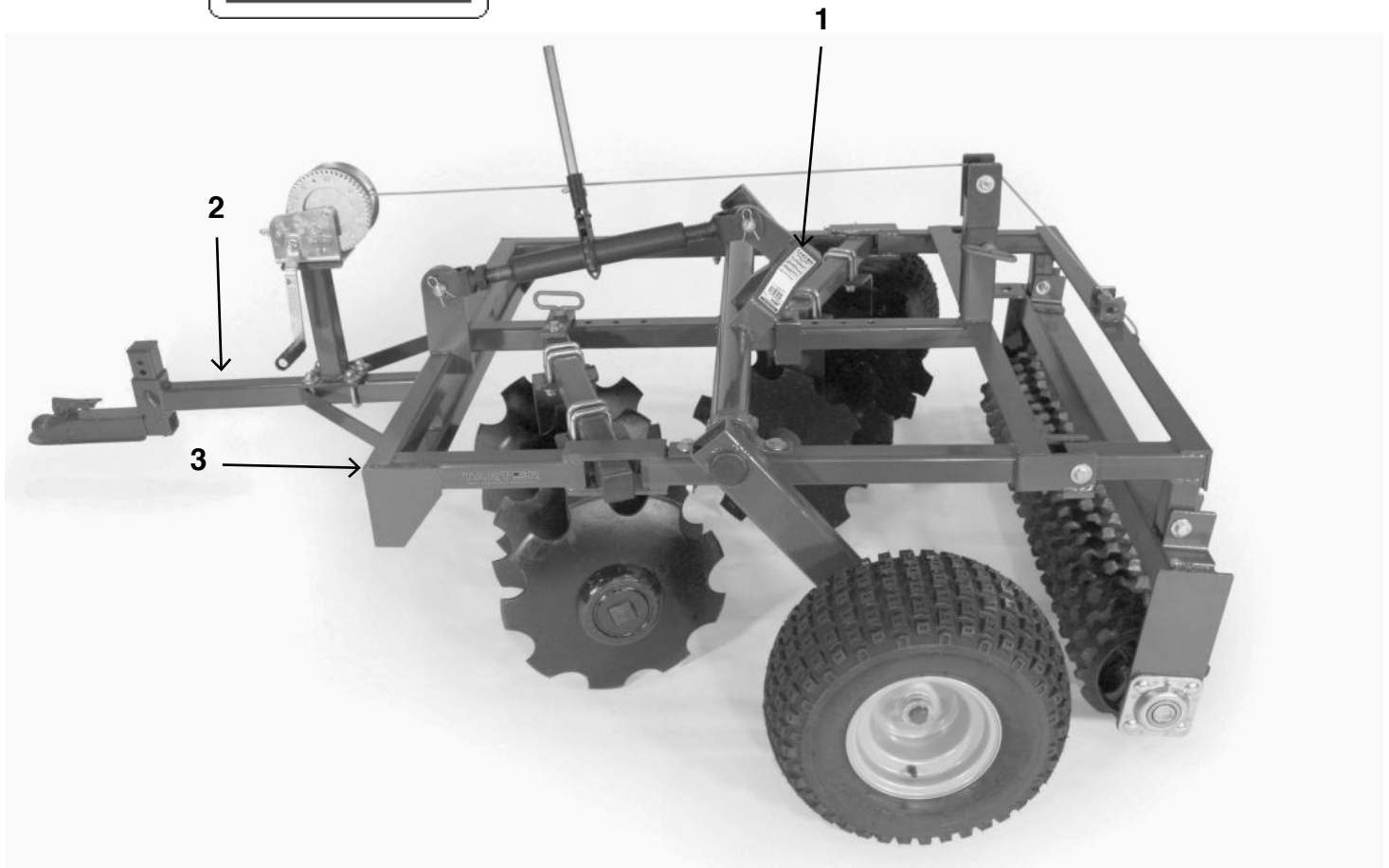
Item 1



Item 2



Item 3



## TRAINING

Safety instructions are important! Read all attachments and power unit manuals; follow all safety rules and safety decal information. (Replacement manuals and safety decals are available from Tarter Farm and Ranch Equipment) Failure to follow instructions or safety rules can result in serious injury or death.

If you do not understand any part of this manual and need assistance, please contact Tarter Farm and Ranch Equipment.

Know your controls and how to stop the engine and implement quickly in an emergency. Operators must be instructed in and be capable of the safe operation of the equipment, its attachments, and all controls. Do not allow anyone to operate this equipment without proper instructions.

Never allow children or untrained persons to operate equipment.

## PREPARATION

Check that all hardware is properly installed.

Always tighten to torque chart specifications unless instructed otherwise in this manual.

Always wear relatively tight and belted clothing to avoid getting caught in moving parts. Wear sturdy, rough-soled work shoes and protective equipment for eyes, hair, hands, ears, and head; wear respirator or filter mask where appropriate.

Make sure implement is properly secured, adjusted, and in good operating condition.

Remove accumulated debris from this equipment, power unit, and engine to avoid fire hazard.

Keep seat belt securely fastened. Falling off power unit can result in death from being run over or crushed.

Make sure all safety decals are installed. Replace if damaged. (See Safety Decals section for location.)

Inspect and clear area of stones, branches, or other hard objects that might be thrown, causing injury or damage.

## STARTING AND STOPPING

Understand how to stop power unit and implement quickly in case of an emergency.

## TRANSPORTATION

Keep seat belt securely fastened. Falling off power unit

can result in death from being run over or crushed.

Always comply with all state and local lighting and marking requirements.

Never allow riders on power unit or implement.

Watch for hidden hazards on the terrain.

Do not operate or transport on steep slopes.

Do not operate or transport equipment while under the influence of alcohol or drugs.

When encountering rough terrain during transport, reduce power unit speed to minimize the horizontal movement of implement.

At all times, when driving the ATV/UTV and the ATV Disc on the road or highway under 25 MPH use flashing amber warning lights and a slow moving vehicle identification emblem. Do not exceed 25 MPH. Reduce speed on rough roads and surfaces.

Be a safe and courteous driver. Always yield to oncoming traffic in all situations, including narrow bridges and intersections. Watch for traffic when operating new or crossing roadways.

Turn on curves or go up or down hills only at a low speed and at a gradual steering angle. Slow down on rough or uneven surface. ALWAYS check the ATV/UTV manual for proper use on slopes.

Use extreme care when operating close to ditches or fences. Be careful when turning sharp corners.

Stabilizer bars should be used during transport to reduce lateral movement of implement

## OPERATION

Do not allow bystanders in the area when operating, attaching, removing, assembling, or servicing equipment.

Never discharge directly toward people, animals, or property.

This implement is intended for agricultural applications only. Do not operate within 300 feet of bystanders or public roads or highways.

Do not operate or transport equipment while under the influence of alcohol or drugs.

Keep hands, feet, hair, and clothing away from equipment while operating. Stay clear of all moving parts.

Operate only in daylight or satisfactory artificial light.

Always comply with all state and local lighting and

# SAFETY

marking requirements.

Never allow riders on power unit or implement.

Keep seat belt securely fastened.

Falling off power unit can result in death from being run over or crushed.

Always sit in power unit seat when operating controls or starting engine. Securely fasten seat belt, place transmission in neutral, engage brake, and ensure all other controls are disengaged before starting power unit engine.

Look down and to the rear and make sure area is clear before operating in reverse (reverse operation is not recommended).

Do not operate or transport on steep slopes.

Do not stop, start, or change directions suddenly on slopes.

Use extreme care and reduce ground speed on slopes and rough terrain.

Watch for hidden hazards on the terrain during operation.

Stop power unit and equipment immediately upon striking an obstruction. Turn off engine, remove key, inspect, and repair any damage before resuming operation.

## MAINTENANCE

Good maintenance is the owner's responsibility.

Keep area clean and dry. Be sure electrical outlets and tools are properly grounded. Use adequate light for the job at hand.

Make sure there is plenty of ventilation. Never operate the ATV/UTV in a closed building. Exhaust fumes may cause asphyxiation.

Before working underneath, carefully read Operator's Manual instructions, raise implement, securely block up all corners with jack stands, and check stability. Secure blocking prevents equipment from dropping, or mechanical component failures.

Periodically tighten all bolts, nuts and screws and check that all pins are properly installed to ensure unit is in safe condition.

Do not modify, alter, or permit anyone else to modify or alter the equipment or any of its components in any way.

Always wear relatively tight and belted clothing to avoid getting caught in moving parts. Wear sturdy, rough-

soled work shoes and protective equipment for eyes, hair, hands, ears, and head; wear respirator or filter mask where appropriate.

Make sure implement is properly secured, adjusted, and in safe operating condition.

Keep all persons away from operator control area while performing adjustments, service, or maintenance.

Never go underneath equipment (lowered to the ground or raised) unless it is properly blocked and secured. Never place any part of the body underneath equipment or between moveable parts even when the engine has been turned off. Movement of control levers can cause equipment to drop or rotate unexpectedly and cause severe injury or death. Follow Operator's Manual instructions for working underneath and blocking procedures.

Make certain all movement of equipment components has stopped before approaching for service.

Frequently check blades/tines/shanks. They should be sharp, free of nicks and cracks, and securely fastened.

Do not handle blades/tines/shanks with bare hands. Careless or improper handling may result in serious injury.

Do not allow debris, grease or oil to build up on wheels and discs.

## STORAGE

Before detaching power unit or performing any service or maintenance, follow these steps: disengage power to equipment, lower all raised components to the ground, set parking brake, stop engine, remove key, and unfasten seat belt.

Block equipment securely for storage.

Keep children and bystanders away from storage area.

Follow manual instructions for storage.

Always use a power unit to position equipment for storage. Never attempt to move equipment by hand.

## EQUIPMENT SAFETY GUIDELINES

Safety of the operator and bystanders is one of the main concerns in design and development. However, accidents always occur which could have been avoided by a few seconds of thought and a more careful approach to handling equipment. You, the operator, can avoid many accidents by observing the following precautions and insist those working with you, follow them.



Replace any safety sign that is illegible or missing.  
Location of such safety signs are indicated in this manual.

Never use alcoholic beverages or drugs that can hinder alertness or coordination while operating this equipment. Consult your doctor about operating this machine while taking prescription medications.

Under no circumstances should children under the age of 18 be allowed to operate this equipment. Do not allow persons to operate or assemble this unit until they have read this manual and have developed a thorough understanding of the safety precautions and how it works. Review the safety instructions with all users annually.

This equipment can be dangerous to children and persons unfamiliar with its operation. The operator should be a responsible, properly trained and physically able person familiar with power unit and implement and trained in this equipment's operations.

Use seat belts.

Never exceed the limits of a piece of machinery. If its ability to perform a job safely, is in question, DON'T TRY IT.

Do not modify the equipment in any way. Unauthorized modification could result in serious injury or death and may impair the function and life of the equipment.

In addition to the design and the confirmation of this implement, including safety signs and safety equipment, hazard control and accident prevention are dependent upon the awareness, concern, prudence, and proper training of personnel involved in the operation, transport, maintenance, and storage of the machine. Refer also to safety messages and operation instruction in each of the appropriate sections of the tractor and implement manuals. Heed the safety signs affixed to both the power unit and implement.

# ASSEMBLY/ATTACHING

## ASSEMBLY

1. Place your ATV Disc on level ground for assembly.
2. Remove the cotter pin, to remove the pin in the hitch.



3. Once these are removed, remove the hitch and turn 180 degrees and place in the desired setting using the pin and cotter pin.



**NOTE:** Location of the hitch is based on the ATV/UTV/small tractor that you are operating. Implement needs to be parallel with the ground.

4. Before use, check all grease fittings located on your ATV Disc. There is one located on each wheel/tire assembly, two on the ratchet jack, and one on each end of the culti-packer (if you have the ATVCPDC).
5. Your ATV Disc is now ready to be attached to your ATV/UTV or small tractor.

## ATTACHING

1. For the ATVCPDC, lower the culti-packer to the ground, using the winch.



**CAUTION:** Keep pressure on the handle until the culti-packer is on the ground and the handle is in the locked position.



**CAUTION:** To safely attach and detach the ATVCPDC, please ensure that the culti-packer is on the ground.

2. Place the unit onto the 2" ball of your ATV/UTV or small tractor and secure the hitch.



**NOTE:** Location of the hitch is based on the ATV/UTV/small tractor that you are operating. Implement needs to be parallel with the ground.

## TRANSPORTATION

**NOTE:** Location of the hitch is based on the ATV/UTV/small tractor that you are operating. Implement needs to be parallel with the ground.

1. Using the ratchet jack, please ensure the disc are raised high enough and there is enough clearance for transportation.



raised all the way up for transporting.



## OPERATION

### EIGHT BLADE TILLAGE DISC

1. There are two lines of 16" blades (four to a side). They can be straightened for a smoother cut or angled for more aggressive cutting.
2. A top bar, with four adjustments, make it easy to adjust and secure the angle of the disc.



**CAUTION:** Keep pressure on the handle until the culti-packer is on the ground and the handle is in the locked position.

3. Once culti-packer is raised to the transport position, re-insert pin as pictured below.



3. The two-way ratchet raises and lowers the wheels to control pulling weight and provide easy transport.
4. 4-ply 13" tubeless tires offer complete ground clearance and can reduce drag depending on surface.

# DETACHING/STORAGE/MAINTENANCE

## CULTI-PACKER

1. Culti-packer can easily be raised or lowered with the hand winch.



**CAUTION:** Keep pressure on the handle until the culti-packer is on the ground and the handle is in the locked position.

2. To lower the culti-packer, remove the pin as pictured below.



3. Using the hand winch, begin lowering the culti-packer to the ground.



**CAUTION:** Keep pressure on the handle until the culti-packer is on the ground and the handle is in the locked position.

## DETACHING/STORAGE

Please ensure the disc, wheels, and culti-packer are on level ground before detaching from ATV/UTV or small tractor.



**CAUTION:** Use caution when detaching from your ATV/UTV or small tractor. Depending on the position of the culti-packer and/or disc, the implement may tilt up when detaching. To help prevent the implement from tilting, lower the disc and the culti-packer to the ground before detaching.

## MAINTENANCE

Periodically tighten all bolts, nuts and screws and check that all pins are properly installed to ensure the implement is in safe condition.

Periodically grease all grease zerks. There is one located on each wheel/tire assembly, two on the ratchet jack and one on each end of the cultipacker (if you have the ATVCPDC).



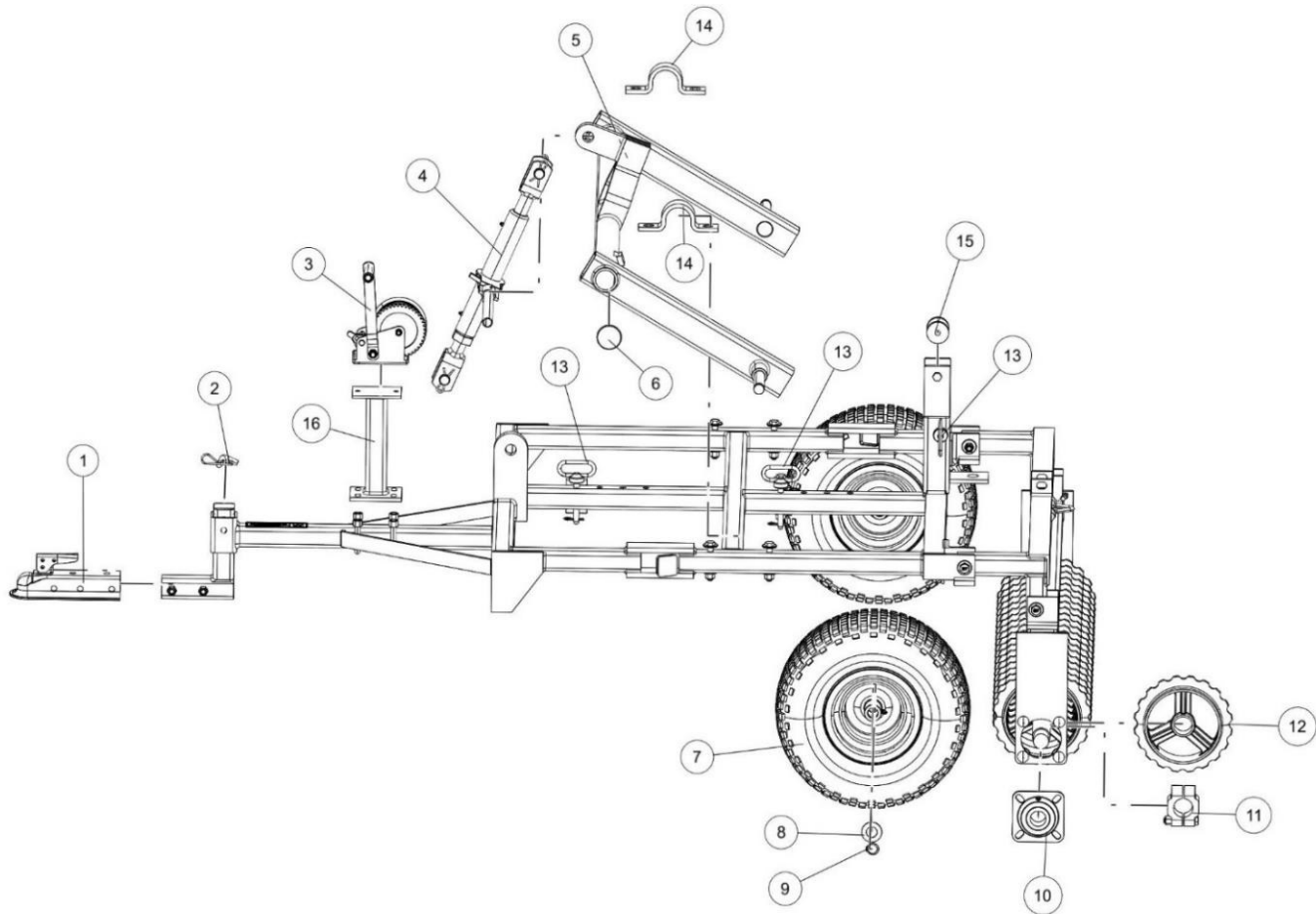
# PRODUCT SPECIFICATIONS

	ATVCPDC	ATVTD8
Weight	711 lbs.	430 lbs.
Working Width	48" cutting width	
Overall Width	76"	
Overall Length	93"	61"
Height	34"	30"
Hitch	Requires a 2" ball for hookup	
Disc Blades	Adjustable 16", 3.175 mm notched	
Disc Blade Spacing	7.5"	
Number of Gangs	2	
Number of Disc	8 disc (4 per gang)	
Disc Axle Bearing Type	Replaceable sealed, 2 per gang	
Gang Tube	2×2" square tubing	
Gang Angle	4 hole adjustment (0, 7.5, 15, 22.5 degree)	
Cultipacker Bearings	2	0
Cultipacker Wheels	22	0

# PARTS

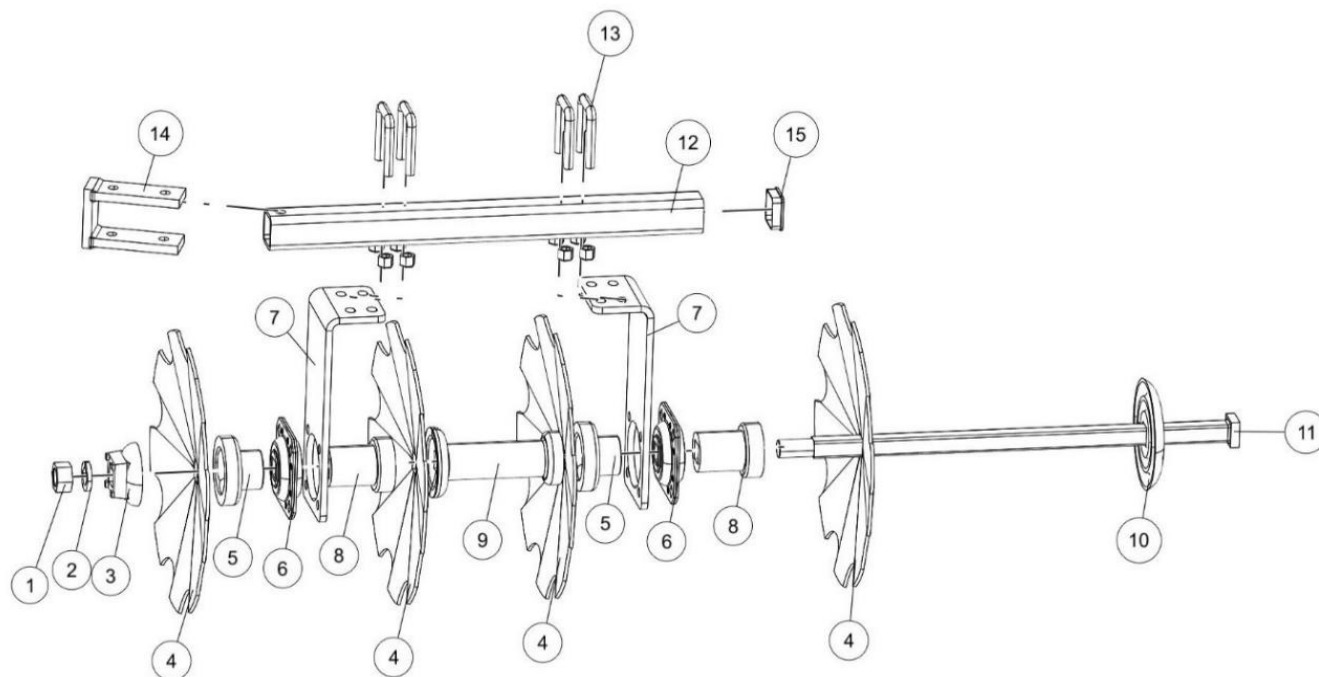
## ATVCPDC ATVTD8

\*note atvtd8 does not include items 2,4,6,13



Item #	Part#	Description
1	2C	2" Coupler Hitch
2	2CP	2" Coupler Hitch Pin
3	ATVHW	Hand Winch
4	RJWP	Ratchet Jack
5	ATVCPDCTWA	Replacement Wheel Axle Frame ( w/o wheels)
6	PEC238	2-3/8" Rd. Plastic Plug (2pk)
7	WTADCP	Wheel Tire Assembly
8	FW1998	1.998 O.D x 1.069 I.D Flat Washer
9	SR1	1" Snap Ring
10	SB112RH	Sealed Bearing 1- 1/2' Round Hole
11	ATVCLH	cultipacker axle clamp holder
12	ATVCW	Cultipacker Wheels
13	RHP	Red Hed Pin
14	ATVCLH	Clamp Holder
15	HSR	cable pulley
16	ATVHWSA	Winch stand weldment

## ATVCPDC/ATVTD8 Gang Assembly



Item #	Part#	Description
1	AN	1" axle nut
2	WS100	1" split lock washer
3	DWS	Axle Washer
4	NDB16	Disc Blade - Notched
5	238S	Spool spacer 2-3/8"
6	HDDBA	Sealed Bearing Assembly for disc axle
7	ATVBS	Bearing Stand for disc axle
8	358S	Spool Spacer 3-5/8"
9	PS7	Spacer 7 1/2 "
10	DWL	Bumper Washer
11	1A26	1" X 26" Axle
12	9000429	Disc Gang Hanger Tube
13	12UB	1/2" U-Bolt w/ nut
14	9001023	Gang coupler weldment
15	PEC2	2" Square plastic plug

## MANUFACTURER'S LIMITED WARRANTY

Tarter Farm and Ranch Equipment warrants to the original purchaser that the purchased product is free from defects in material and workmanship for a period of one (1) year commencing on the date of original purchase, as evidenced by the original receipt, and will, at its option, repair, replace or issue credit for any product or part found to be defective.

This limited warranty shall only apply if this product has been operated and maintained in accordance with the Operator's Manual furnished with the product, and has not been subject to misuse, abuse, commercial or industrial use, neglect, improper maintenance, alteration, or accident or which has been used for a purpose for which the product was not designed. Damage resulting from the installation or use of any part, accessory, or attachment not approved by Tarter Farm and Ranch Equipment, for use with the product covered by the Operator's Manual, shall void the warranty as to any resulting damage.

This limited warranty is extended solely to the original purchaser of the product. Should the original purchaser sell or otherwise transfer this product to a third party, this warranty does not transfer to the third party in any manner.

### **HOW TO MAKE A CLAIM:**

To obtain warranty service through a local authorized retailer, a customer must present the following within thirty (30) days of implement failure:

1. Proof of purchase within one (1) year of purchase date.
2. Photographs of or return of the actual product in question.
3. Photograph of UPC label.

After receipt of the above information, if the product is alleged to be defective, Tarter Farm and Ranch Equipment will process the claim and issue a Return Manufacturers Authorization number (RMA). Once an RMA number is issued, Tarter Farm and Ranch Equipment will pick up the product from the authorized retailer and return to its facility for inspection. Tarter Farm and Ranch Equipment will replace, repair, or issue credit for any product after examination which is determined to be defective due to defects in material and workmanship.

For additional Warranty questions, please call 1-800-RED-GATE or email [warranty@tarterusa.com](mailto:warranty@tarterusa.com) for assistance.



**WARRANTY DISCLAIMER:**

This limited warranty is in lieu of, and Tarter Farm and Ranch Equipment disclaims and excludes any express and implied warranties with respect to the product including, without limitation, merchantability, and fitness for a particular purpose. No other express warranty, whether written or oral, given by any person or entity, including a retailer, with respect to any product, shall bind Tarter Farm and Ranch Equipment.

Tarter Farm and Ranch Equipment's exclusive liability for breach of the limited warranty, as set forth above, on the product shall be to repair or replace the implement within the warranty period in accordance with the terms of this limited warranty. The choice of remedy shall belong solely to Tarter Farm and Ranch Equipment. In no event shall Tarter Farm and Ranch Equipment be liable for any loss or damages of any other kind, whether direct, incidental, consequential including lost profits, exemplary, special, or otherwise, including without limitation, expenses incurred for substitute or replacement implement or for rental expenses to temporarily replace a warranted product.

Under no circumstance shall recovery, of any kind, be greater than the amount of the purchase price of the product purchased. Customer assumes all risk and liability for loss, damage, or injury to customer or customer's property and/or the property of others arising out of the misuse or inability to use the product.

**LEGAL RIGHTS**

This limited warranty gives you specific legal rights, and you may also have other rights which may vary from state to state. Some states do not allow any limitation on how long an implied warranty lasts or the exclusion or limitation of incidental or consequential damages, so the above limitations may not apply to you.

-----

**KEEP FOR YOUR RECORDS**

Record the model number, serial number, and the date of purchase with the original sales receipt. This information will be helpful to the retailer if parts or service are required.

**Model Number** \_\_\_\_\_

**Serial Number** \_\_\_\_\_

**Date of Purchase** \_\_\_\_\_

**Retailer** \_\_\_\_\_





**TARTER**<sup>®</sup>  
FARM AND RANCH EQUIPMENT

P.O. BOX 10  
10739 S. HWY 127  
DUNNVILLE, KY 42528  
1-800-REDGATE | TARTERUSA.COM