

# **FERTILIZER SPREADER MOD. FS/PFS**

---



## **OWNERS' MANUAL**

 Read the Operator's manual entirely before using the machine 

the first two cases, the first two terms of the series are  $\frac{1}{2}$  and  $\frac{1}{4}$ , and the sum of the series is  $\frac{1}{2} + \frac{1}{4} = \frac{3}{4}$ . In the third case, the first two terms are  $\frac{1}{2}$  and  $\frac{1}{4}$ , and the sum of the series is  $\frac{1}{2} + \frac{1}{4} = \frac{3}{4}$ .

Therefore, the sum of the series is  $\frac{3}{4}$  in all three cases.

Therefore, the sum of the series is  $\frac{3}{4}$  in all three cases.

Therefore, the sum of the series is  $\frac{3}{4}$  in all three cases.

Therefore, the sum of the series is  $\frac{3}{4}$  in all three cases.

Therefore, the sum of the series is  $\frac{3}{4}$  in all three cases.

Therefore, the sum of the series is  $\frac{3}{4}$  in all three cases.

Therefore, the sum of the series is  $\frac{3}{4}$  in all three cases.

Therefore, the sum of the series is  $\frac{3}{4}$  in all three cases.

Therefore, the sum of the series is  $\frac{3}{4}$  in all three cases.

Therefore, the sum of the series is  $\frac{3}{4}$  in all three cases.

Therefore, the sum of the series is  $\frac{3}{4}$  in all three cases.

Therefore, the sum of the series is  $\frac{3}{4}$  in all three cases.

Therefore, the sum of the series is  $\frac{3}{4}$  in all three cases.

Therefore, the sum of the series is  $\frac{3}{4}$  in all three cases.

Therefore, the sum of the series is  $\frac{3}{4}$  in all three cases.

Therefore, the sum of the series is  $\frac{3}{4}$  in all three cases.

Therefore, the sum of the series is  $\frac{3}{4}$  in all three cases.

---

---

# **FERTILIZER SPREADER**

## **MOD. FS/PFS**

OWNERS' MANUAL

 Read the Operator's manual entirely before using the machine 

---

---



---

---

# INDEX

.....	6
.....	6
.....	6
.....	7
.....	7
.....	7
.....	9
.....	9
.....	10
.....	13
.....	14
.....	14
.....	15
.....	15
.....	16
.....	17
.....	17
.....	19
.....	19
.....	21
.....	22
.....	23
.....	23
.....	24
.....	24
.....	25

**COPYRIGHT**  
The technical information of this manual must be considered  
strictly reserved.  
  
Text and illustration reproduction is forbidden



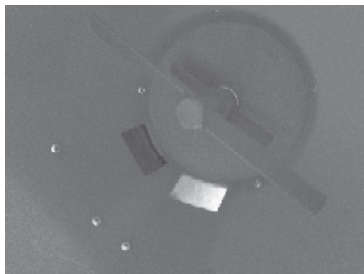
---

---

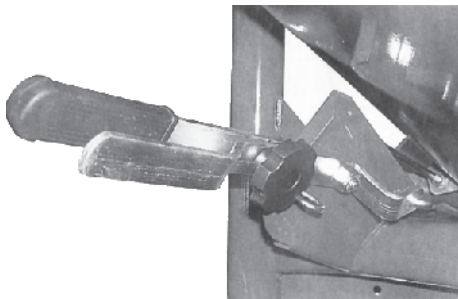
## 2.2. INFORMATION ON THE SPREADER



*Spreader disc*



*Agitator*



*Lever system*



A  
B  
C  
D

- F
  - A. Regulating lever
  - B. Third hitch point
- G
  - C. Sheet case
  - D. Hitch pin
  - E. PTO shaft hitch
- H
  - F. Hopper
  - G. Steel frame
  - H. Distributor vanes

**FS / PFS**

Hopper capacity (litres /gallons) (Kg/lbs)	220/58 285/628
Weight of the machine (Kg/lbs)	54/119
Loading height (meters/inches)	1.01/40
Hopper width (meters/inches)	1.00/39.37
Spreading width (meters/ft) Granular Crystalline	12-14/39-46 6-7/20-23
Power required at 540 rpm (Kw/Hp)	8/6

---

---

**THE FOLLOWING SAFETY RECOMMENDATIONS ARE TO INSURE YOUR SAFETY: THEREFORE IT IS NECESSARY TO READ THEM CAREFULLY, MEMORIZING AND ALWAYS APPLYING THEM.**

---

---

*The present warnings in this manual must be followed to use the spreader safely. All below instructions must be integrated by common sense and by the experience of the operator's indispensable measures to prevent accidents.*

The machine must be used by a single operator, 18 years or older.

All the listed instructions must be carefully respected.

Any modifications or changes to the machine without written authorization from the manufacturer, excludes the manufacturers of any and all liabilities.

Check for correct functioning of the spreader before every use.

**General advice**

- Read this manual carefully before proceeding to start, operate, or maintain the spreader.
- The manual must always be handy, so as to consult it, in order to check working cycle and safety information. In case of loss or damage, it will be necessary to ask for another copy.



**ATTENTION!**

Any maintenance, adjustments and cleaning must be done with the spreader on the ground (in stable conditions), turning off the tractor engine and removing the key.

- Read carefully the warning labels applied on the spreader and follow the instructions. In case of wear and tear or insufficient readability of the warning labels, clean them up or replace them. Place the warning labels in the right position, as shown in paragraph 3.1 (page 13)



**ATTENTION!**

The operator, during the period of use, maintenance, repair, handling or storing of the spreader, must wear proper safety attire and follow safety instructions as listed in the manual.

- During loading phase, there is the danger of powder inhalation produced by media. It is suggested to use tractors with filters on the ventilation system of the cabin, or use suitable safety masks.

- 
- 



DANGER!

- 
- 
- 



WARNING!



ATTENTION!

---

---

### Connection of the spreader to the tractor

- The third hitch point of the tractor and the fertilizer spreader must coincide or must be adapted.
- Make sure that the PTO shaft is engaged in correct way after every linkage operation of the spreader and that it does not come uncoupled when the spreader is lowered in order to fill the hopper.



#### **ATTENTION! DANGER!**

Check that shielding of the PTO shaft are complete and in good conditions.

- In case of breaking or deterioration of the PTO shaft shielding, please replace PTO immediately.
- The presence of the spreader can influence the manoeuvrability of the tractor, in particular during transport.

### Operation of the spreader

- Check the spreader before engaging begin work only if the spreader is in perfect working condition.
- Before using the spreader , please be sure that all the safety devices are correctly installed and in good condition.



#### **ATTENTION!**

**During work, please be sure that for a radius of 50 meters (164 feet )there are no obstacles including people or animals . When you work in proximity of roads or public places, it is ABSOLUTELY mandatory to keep away from people and to increase the precautions.**



#### **ATTENTION!**

**The operator must prevent anybody from entering danger area and work with the maximum caution. If somebody enters, please stop the tractor engine immediately.**

- Before every use, please check the wear of the vanes and the spreader disc. Check that all the components (Screws, bolts, etc.) are in and tight.
- The spreader must never be unattended when it is moving.
- Always keep the spreader in good operating conditions and perform regular maintenance.



#### **ATTENTION!**

**Not for Highway use or Transport.**

### 3.1. SAFETY SIGNAL



#### ATTENTION!

Be sure that the warning labels are readable. Clean them up using a cloth, water and soap . Replace the damaged labels placing them in the right position, as subsequently described.



**1.ATTENTION!** Before making any operation on the machine , stop the engine of the tractor or of the self-moving means , remove the key , put on the parking brake and read carefully the operator' manual.



**3.ATTENTION!** Check the sense of rotation and the number of revolutions (540 rpm) of the tractor power before placing the pto shaft.



**5.ATTENTION!** DANGER! Possible throwing of material and/or objects, please do not stop or come up to the machine. Keep a safe distance of 50 meters, at least , from the machine.



**2. ATTENTION!** DANGER of entangling and dragging. Do not put hands near the running gear box.



**4. ATTENTION!** DANGER of crushing . Do not stop between the machine and tractor when the tractor engine is running.

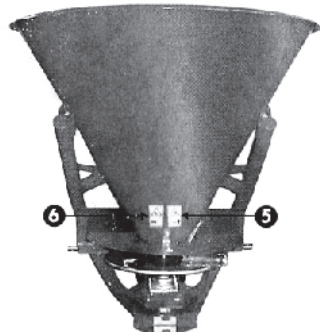
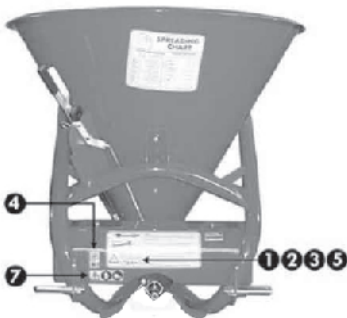


**6.ATTENTION!** DANGER of shearing .Do not approach limbs to the spreader disc when the machine is running.



**7.ATTENTION!** Use the individual Protection Devices, as required.

#### Where placing the safety signals on the machine



---

---

Before coupling the spreader to the 3-point hitch, position the safety devices on tractor , so that it is not possible to involuntary and/or accidentally raise or lower the arms.

The 3-point hitch of the tractor and spreader must coincide or must be adapted.

Serious injury may occur if you become in close proximity of the lift arms of the 3-point hitch of the tractor due to the cutting points.

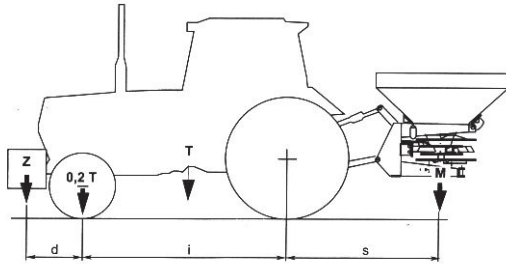
Do not use the external controls to lift the spreader.



**DANGER!**



ATTENTION!



- 
- 
- 
- 



ATTENTION!

- 
-





---

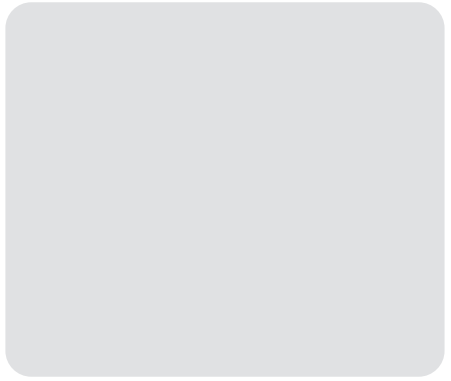
---

## 5.1. ADJUSTMENTS

It is not possible to have an exact spreading chart for the centrifugal equipment , as the distributed quantity depends on the speed, on the radius of distribution, on the quality and humidity of the media and on the roughness of the land . The media must always be stored properly to keep its physical characteristics unchanged . It is necessary to set the regulation lever of the spreader , before starting the operation of distribution , adding in the possible limits , to keep it constant for all its duration. The spreading charts contain the information, in order to determine the quantity to spread in the field; these must be completed by competent operators.

### 5.1.1 HOW TO ADJUST THE SPREADER VANES

In order to assure an even distribution on both sides of the spreader , depending on the different specific weight of the media used , the distributor vanes on the disc can have a different position. When all the vanes are put in hole 1 ( as shown in the picture ) , the distribution of the media is increased towards the left, compared to the way the tractor is moving , If the vanes are put in hole 5, the distribution will be more towards the right . When moving the vanes from 1 to 5 on the same speed , there will be an increase of the distributing width . This adjustment must be made according to the type of media used.







- 
- 
- 
- 
- 
- 





- 
- 
- 
- 
- 



- 
- 
- 
- 
- 



- 
- 





WARNING!



WARNING!





- 
- 
- 
- 







- 
- 
- 







